

THIS INSTRUMENT PREPARED BY
DAVID P. LINDLEY
OF
CAULFIELD and WHEELER, INC.
SURVEYORS - ENGINEERS - PLANNERS
7900 GLADES ROAD, SUITE 100
BOCA RATON, FLORIDA 33434 - (561)392-1991
CERTIFICATE OF AUTHORIZATION NO. LB3591

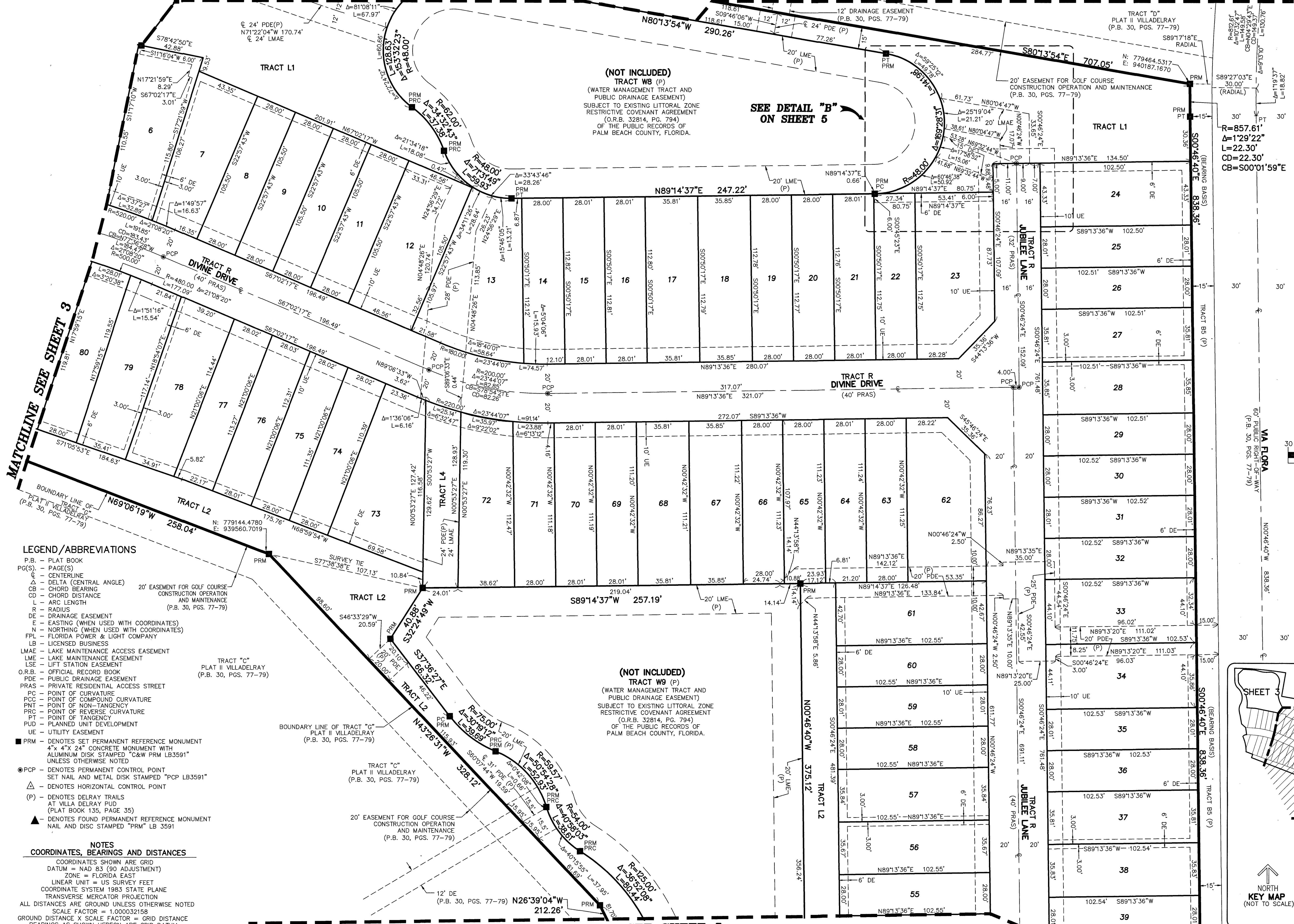
DELRAY TRAILS AT VILLA DELRAY PUD POD C REPLAT

BEING A REPLAT OF PARCEL C, DELRAY TRAILS AT VILLA DELRAY PUD,
AS RECORDED IN PLAT BOOK 135, PAGES 35 THROUGH 62
OF THE PUBLIC RECORDS OF PALM BEACH COUNTY, FLORIDA,
LYING IN SECTION 11, TOWNSHIP 46 SOUTH, RANGE 42 EAST, PALM BEACH COUNTY, FLORIDA.

MATCHLINE SEE SHEET 3

MATCHLINE SEE SHEET 3

150



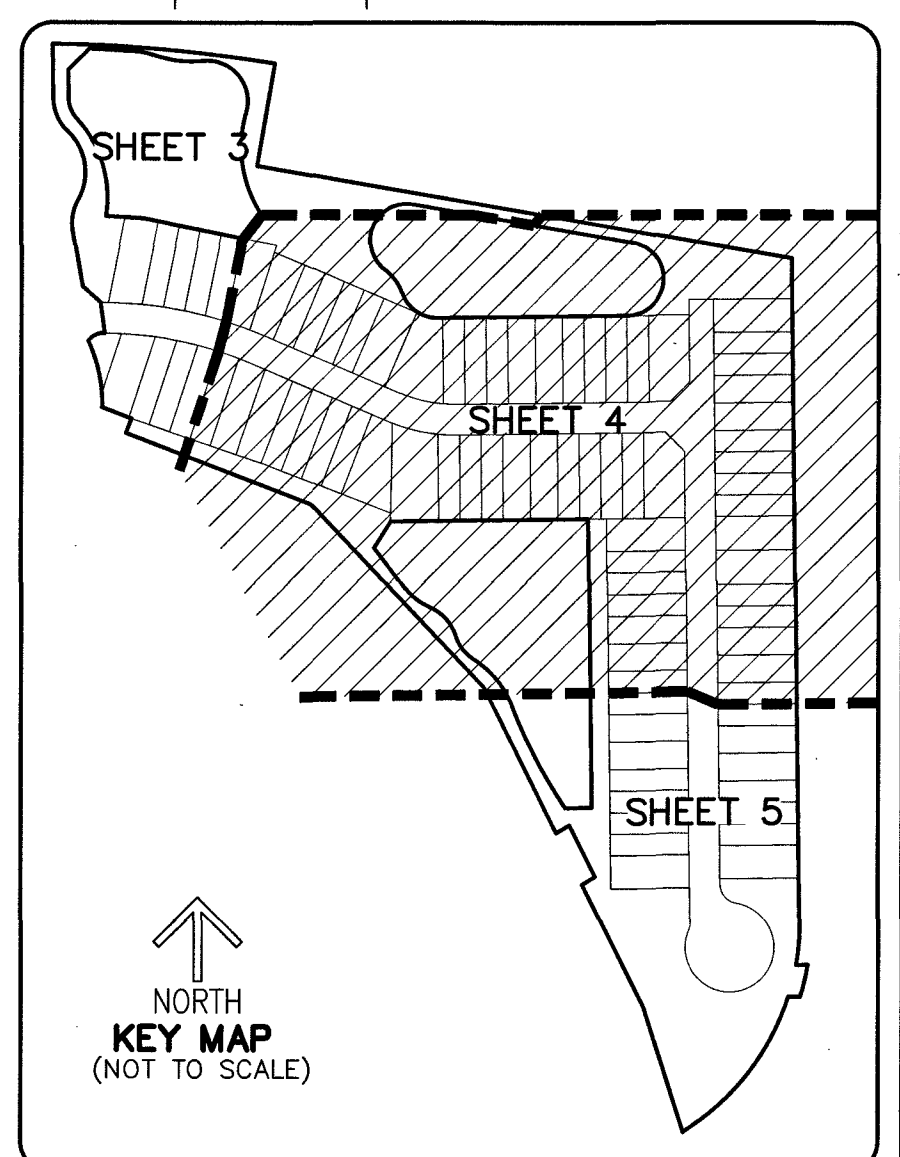
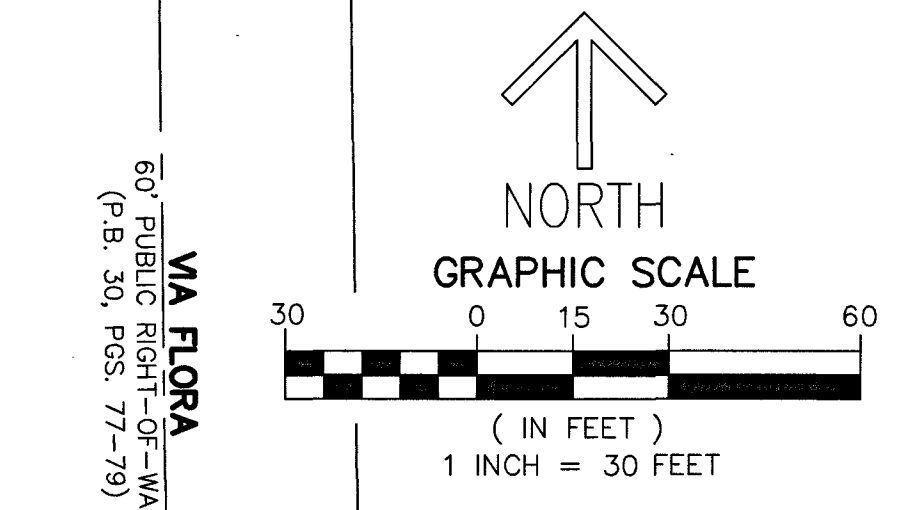
(NOT INCLUDED)
TRACT W8 (P)
(WATER MANAGEMENT TRACT AND
PUBLIC DRAINAGE EASEMENT)
SUBJECT TO EXISTING LITTORAL ZONE
RESTRICTIVE COVENANT AGREEMENT
(O.R.B. 32814, PG. 794)
OF THE PUBLIC RECORDS OF
PALM BEACH COUNTY, FLORIDA.

SEE DETAIL "B"
ON SHEET 5

(NOT INCLUDED)
TRACT W9 (P)
(WATER MANAGEMENT TRACT AND
PUBLIC DRAINAGE EASEMENT)
SUBJECT TO EXISTING LITTORAL ZONE
RESTRICTIVE COVENANT AGREEMENT
(O.R.B. 32814, PG. 794)
OF THE PUBLIC RECORDS OF
PALM BEACH COUNTY, FLORIDA.

SHEET 4 OF 5

MATCHLINE SEE SHEET 3



- LEGEND/ABBREVIATIONS**
- P.B. - PLAT BOOK
 - PG(S). - PAGE(S)
 - C - CENTERLINE
 - Δ - DELTA (CENTRAL ANGLE)
 - N - NORTHING (WHEN USED WITH COORDINATES)
 - CB - CHORD BEARING
 - CD - CHORD DISTANCE
 - L - ARC LENGTH
 - R - RADIUS
 - DE - DRAINAGE EASEMENT
 - E - EASTING (WHEN USED WITH COORDINATES)
 - N - NORTHING (WHEN USED WITH COORDINATES)
 - FPL - FLORIDA POWER & LIGHT COMPANY
 - LB - LICENSED BUSINESS
 - LMAE - LAKE MAINTENANCE ACCESS EASEMENT
 - LME - LAKE MAINTENANCE EASEMENT
 - LSE - LIFT STATION EASEMENT
 - O.R.B. - OFFICIAL RECORD BOOK
 - PDE - PUBLIC DRAINAGE EASEMENT
 - PRAS - PRIVATE RESIDENTIAL ACCESS STREET
 - PC - POINT OF CURVATURE
 - PCC - POINT OF COMPOUND CURVATURE
 - PNT - POINT OF NON-TANGENCY
 - PRC - POINT OF REVERSE CURVATURE
 - PT - POINT OF TANGENCY
 - PUD - PLANNED UNIT DEVELOPMENT
 - UE - UTILITY EASEMENT
 - PRM - DENOTES SET PERMANENT REFERENCE MONUMENT 4" x 4" x 24" CONCRETE MONUMENT WITH ALUMINUM DISK STAMPED "C&W PRM LB3591" UNLESS OTHERWISE NOTED
 - PCP - DENOTES PERMANENT CONTROL POINT SET NAIL AND METAL DISK STAMPED "PCP LB3591"
 - Δ - DENOTES HORIZONTAL CONTROL POINT
 - (P) - DENOTES DELRAY TRAILS AT VILLA DELRAY PUD (PLAT BOOK 135, PAGE 35)
 - ▲ - DENOTES FOUND PERMANENT REFERENCE MONUMENT NAIL AND DISK STAMPED "PRM" LB 3591

NOTES
COORDINATES, BEARINGS AND DISTANCES
COORDINATES SHOWN ARE GRID
DATUM = NAD 83 (90 ADJUSTMENT)
ZONE = FLORIDA EAST
LINEAR UNIT = US SURVEY FEET
COORDINATE SYSTEM 1983 STATE PLANE
TRANSVERSE MERCATOR PROJECTION
ALL DISTANCES ARE GROUND UNLESS OTHERWISE NOTED
SCALE FACTOR = 1.000032158
GROUND DISTANCE X SCALE FACTOR = GRID DISTANCE
BEARINGS AS SHOWN HEREON ARE GRID DATUM,
NAD 83 (1990 ADJUSTMENT), FLORIDA EAST ZONE.

MATCHLINE SEE SHEET 5